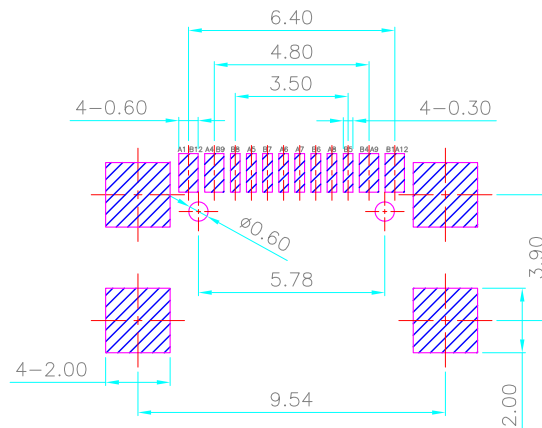
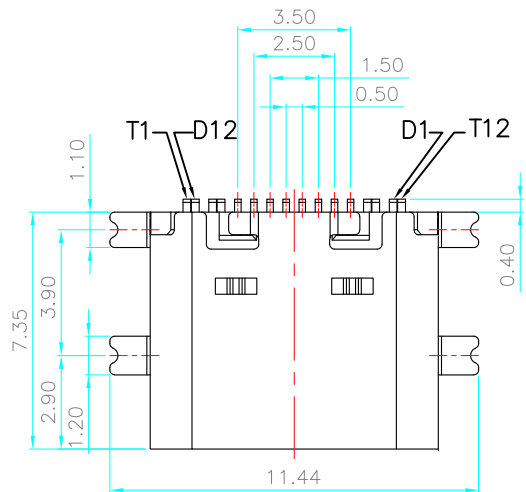
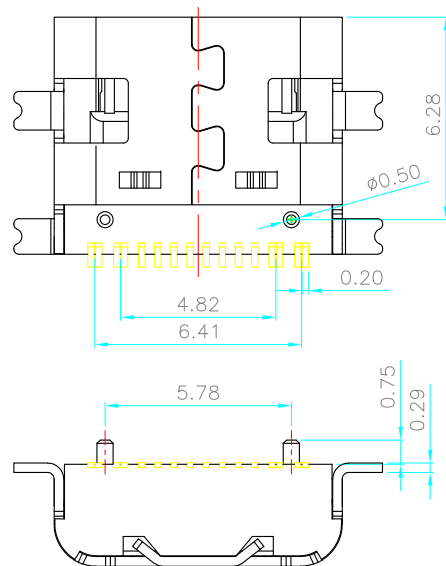
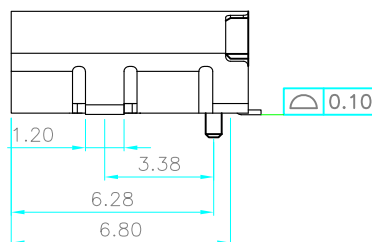
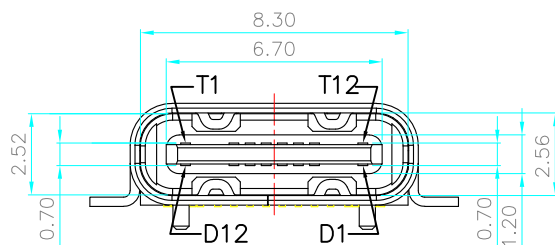


REV.	DESCRIPTION	DATE
A	RELEASE	July 01, 2017



RECOMMEND PCB LAYOUT
TOLERANCE: ± 0.05
TOP VIEW



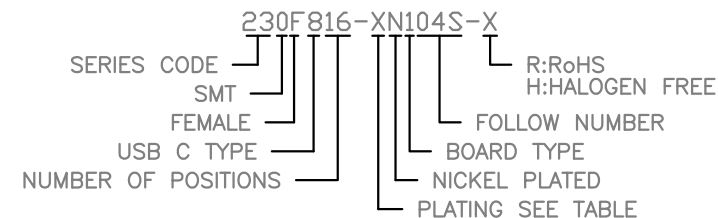
MATERIALS

1. HOUSING :THERMOPLASTIC (UL 94V-0) .
2. TERMINAL : COPPER ALLOY, PLATING SEE TABLE.
3. SHELL :SUS,

SPECIFICATION

1. DIELECTRIC WITHSTANDING VOLTAGE : 100V AC R.M.S. FOR 1 MINUTE.
2. INSULATION RESISTANCE : 100M Ω MIN.AT 100V DC.
3. CONTACT RESISTANCE : 40m Ω MAX.
4. OPERATING TEMPERATURE : -40°C TO +85°C.

PART NUMBER INFORMATION :



DESCRIPTION OF PLATING ON TERMINALS			
NO.	EXPLAIN	NO.	EXPLAIN
0	GOLD FLASH	3	GOLD 15u"
1	GOLD 5u"	4	GOLD 20u"
2	GOLD 10u"	6	GOLD 30u"

PIN	Signal Name	PIN	Signal Name	PIN	Signal Name	PIN	Signal Name
A1	GND	B12	GND	A7	Dn1	B6	Dp2
A2	/	B11	/	A8	SUB1	B5	CC2
A3	/	B10	/	A9	VBUS	B4	VBUS
A4	VBUS	B9	VBUS	A10	/	B3	/
A5	CC1	B8	SUB2	A11	/	B2	/
A6	Dp1	B7	Dn2	A12	GND	B1	GND

TOLERANCE
.0= ± 0.25
.00= ± 0.15
.000= ± 0.05
ANG.= $\pm 3^\circ$

DRAWER
ZL

CHECK
ZL

APP'D
HAWX

PRODUCT SPEC.
—

UNITS : mm

SCALE NONE **SIZE** A4 **SHEET** 1 OF 2 **REV.** A

INMO
东莞市英墨电子有限公司
INMO Electronics Co.,Ltd

NAME
USB TYPE C FEMALE 16PIN板上 SMT
四脚贴板

DRAW NO.
R230F816-XN104S-X